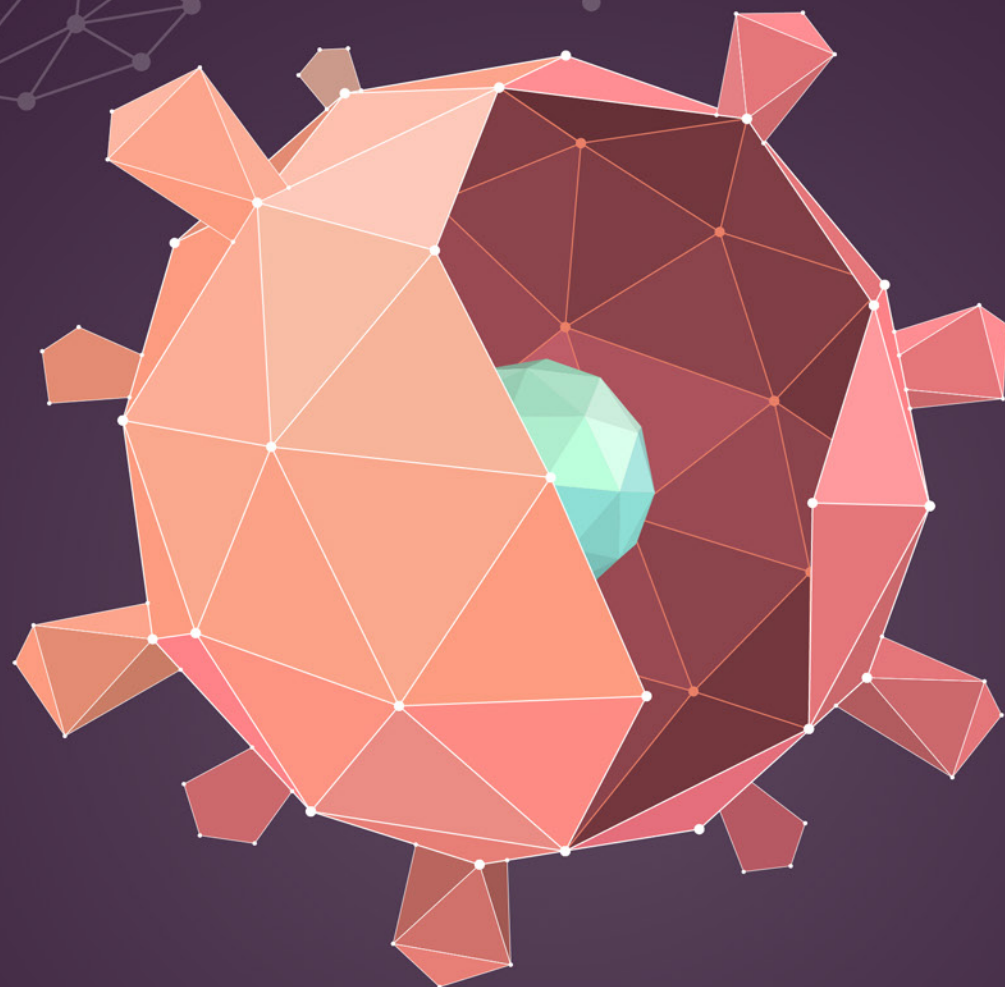


# CONTINUING MEDICAL EDUCATION XXXVI INTERNAL MEDICINE

THE INDONESIAN SOCIETY OF INTERNAL MEDICINE (PAPDI)  
SURABAYA CHAPTER



36  
CONTINUING MEDICAL EDUCATION  
INTERNAL MEDICINE

## SECOND ANNOUNCEMENT

EARLY DIAGNOSIS AND PROMPT TREATMENT  
IN INTERNAL MEDICINE DURING PANDEMIC ERA



VIRTUAL WEB MEETING

NOV 30<sup>th</sup> - DEC 1<sup>st</sup>

DECEMBER 3<sup>rd</sup> - 5<sup>th</sup>

DECEMBER 10<sup>th</sup> - 12<sup>th</sup>

2021

Contact Person : (Whatsapp only)

dr. Nur Arafah 082257104114

dr. Okla 08563346788

PERHIMPUNAN DOKTER SPESIALIS PENYAKIT DALAM INDONESIA (PAPDI)

Jl. Mayjend. Prof. Dr. Moestopo 6-8 Surabaya 60286

Phone. (031) 5501617, 5018436 Fax. (031) 5018434, 5018436

Email. papdisurabaya@yahoo.com. Web Registration. [www.pkbinternasby.com](http://www.pkbinternasby.com)

# CONTINUING MEDICAL EDUCATION XXXVI INTERNAL MEDICINE

THE INDONESIAN SOCIETY OF INTERNAL MEDICINE (PAPDI)  
SURABAYA CHAPTER



## PLENARY

DECEMBER 4<sup>th</sup> - 5<sup>th</sup> & DECEMBER 11<sup>th</sup> - 12<sup>th</sup>

Semaglutide: The Only Once-Weekly T2DM Treatment with Its Superior Efficacy and CV Benefits

The Kidney in Hypertension

Evolution of Hemophilia Care: Where are we now?

Functional Upper Gastrointestinal Disorders: Unsolved Problem and New Perspective

Update on Infectious Disease

Covid-19 and Autoimmune Rheumatic Disease: Future Perspective

Regular Immunization and Clinical Allergy-Immunology Services in the Pandemic Era

Health in Aging: Past, Present, and Future

## SYMPOSIUM

DECEMBER 3<sup>rd</sup> - 5<sup>th</sup> & DECEMBER 10<sup>th</sup> - 12<sup>th</sup>

Endocrine and Metabolic Disorders in Covid-19

Current Update on Prediabetes & Hypertension

Enduring Potential of Basal Insulin: A Legacy of Life-Changing Innovation

Why Should We Move to 2nd Generation Basal Insulin in Diabetes Management?

Transforming the Management of Haemophilia A with Turoctocog Alfa (rFVIII)

Changing Landscape of Multiple Myeloma

Toward the New Era of Survival with Lung Cancer: Immunotherapy as a Standart of Care for Drive Mutation Negative in Metastatic NSCLC

Idiopathic Thrombocytopenic Purpura

Non Hodgkins Lymphoma

Unresolved Issues in and Beyond COVID-19

Acute Kidney Injury

Glomerular Involvement in Systemic Disease

Gastroesophageal Reflux Disease

Non-Viral Hepatitis

Optimizing Chronic Hepatitis B Management in Indonesia

Opportunistic Infection: What is Common Cause of Opportunistic Infection

Antimicrobial Resistance Threat: Potential Bacterial Threat and Strategy Selecting Appropriate Regimens

Nutritional Support for Infection Cases

Cytomegalovirus Infection: Under the Radar Viral Infection

Management of Autoimmune Rheumatic Diseases during Pandemic Era

Geriatric Medicine

## Symposium Registration Fee

	Before October 31 <sup>st</sup>	After October 31 <sup>st</sup>
Paramedic	Rp. 200.000	Rp. 250.000
General Practitioner	Rp. 200.000	Rp. 250.000
Internist (Member of PAPDI Surabaya)	Rp. 300.000	Rp. 500.000
Internist	Rp. 400.000	Rp. 500.000
Other Specialist	Rp. 400.000	Rp. 500.000

PERHIMPUNAN DOKTER SPESIALIS PENYAKIT DALAM INDONESIA (PAPDI)

Jl. Mayjend. Prof. Dr. Moestopo 6-8 Surabaya 60286

Phone. (031) 5501617, 5018436 Fax. (031) 5018434, 5018436

Email. papdisurabaya@yahoo.com. Web Registration. [www.pkbinternasby.com](http://www.pkbinternasby.com)

# CONTINUING MEDICAL EDUCATION XXXVI INTERNAL MEDICINE

THE INDONESIAN SOCIETY OF INTERNAL MEDICINE (PAPDI)  
SURABAYA CHAPTER



## WORKSHOP GCP

Good Clinical Practice (GCP)

NOVEMBER 30<sup>th</sup> & DECEMBER 1<sup>st</sup>

Prof. Dr. dr. Rianto Setiabudi, Sp.FK(K)

Dr. dr. Anwar Santoso, Sp. JP(K)

dr. Henu Tonang

Dr. Ida Paulina Sormin, MSi., Apt.

## WORKSHOP

Management of Hyperglycemic Crisis in  
Diabetes Mellitus

Management of Adrenal Crisis

Nutrition in Liver Disease

Nutrition in Colorectal Cancer

Oxygen Support in Sepsis: New Perspective  
to Overcome Sepsis Condition

Haemodynamic Maintenance in Sepsis

Monitoring in Sepsis and Case Sharing of  
Critical ill

Introduction to Inflammatory Arthritis

Diagnosis Algorithm and Management of  
Inflammatory Arthritis

Is the Third Dose of COVID-19 Really Needed for  
Health Care Professionals?

Immunologic Point of View and Safety of  
COVID-19 Vaccination for Pregnant Women

Managing Clinical Aspect of Dementia

Optimizing non Pharmacological Intervention

DECEMBER 3<sup>rd</sup> & DECEMBER 10<sup>th</sup>

dr. Sri Murtiwi, Sp.PD, KEMD, FINASIM

Dr. dr. Soebagijo Adi S, Sp.PD, KEMD, FINASIM, FACP

dr. Poernomo Boedi Setiawan, Sp.PD, KGEH, FINASIM

dr. Budi Widodo, Sp.PD, KGEH, FINASIM

dr. Arifin, Sp.PD, KIC

dr. Bambang Pujo Semedi, Sp.An, KIC

dr. Franz J.V. Pangalila, Sp.PD, KIC

dr. Lita Diah Rahmawati, Sp.PD, KR, FINASIM

Dr. dr. Yuliasih, Sp.PD, KR, FINASIM

Dr. dr. Gatot Soegiarto, Sp.PD, KAI, FINASIM

dr. Deasy Fetarayani, Sp.PD, KAI, FINASIM

dr. Novira Widajanti, Sp.PD, KGer, FINASIM

dr. Erikavetri Yulianti, Sp.KJ (K)

## Workshop Registration Fee

	Before October 31 <sup>st</sup>	After October 31 <sup>st</sup>
Internist (Member of PAPDI Surabaya)	Rp. 300.000	Rp. 500.000
Other Participants	Rp. 400.000	Rp. 500.000

## GCP Registration Fee

Rp. 1.500.000      Rp. 1.500.000

PERHIMPUNAN DOKTER SPESIALIS PENYAKIT DALAM INDONESIA (PAPDI)

Jl. Mayjend. Prof. Dr. Moestopo 6-8 Surabaya 60286

Phone. (031) 5501617, 5018436 Fax. (031) 5018434, 5018436

Email. papdisurabaya@yahoo.com. Web Registration. [www.pkbinternasby.com](http://www.pkbinternasby.com)